

# Adaptarail Post & Rail

Interior & Exterior Application

Dollar for dollar, Hayward Turnstiles are simply the best turnstile value in the access control industry.

We have engineered our turnstile product line with your needs in mind: Performance, aesthetics, reliability, and ease of maintenance.

In addition to turnstile and crowd control products, we offer design assistance for new installations, as well as custom fabricated devices.

Hayward Turnstiles provides access control systems regionally, nationally, and worldwide.

Contact us for more information about the new generation of turnstiles offered by Hayward Turnstiles.



## Sleek Modern Looks at an Affordable Price

Hayward Turnstiles AdaptaRail Stainless Steel Post and Rail system was created to give our customers an all in one solution for their crowd control needs. Our stainless steel Post and Rail fit seamlessly with our Turnstiles and ADA Security Gates or as a stand alone system. Hayward's Post and Rail system can be used as crowd control for patron queuing and as patron directional guides or channel pedestrians through turnstiles. The stainless steel construction allows for outdoor or indoor use in a wide range of applications from theme parks to executive office areas.

### APPLICATION:

Hayward's Post and Rail system provides security admission and crowd control for convention centers, health clubs, sports facilities, stadiums, amusement parks and office buildings.

Waist High

Full Height

Opticals

ADA Gates

Crowd Control



160A Wampus Lane, Milford, CT 06460

203-877-7096

[sales@HaywardTurnstiles.com](mailto:sales@HaywardTurnstiles.com)

[www.HaywardTurnstiles.com](http://www.HaywardTurnstiles.com)

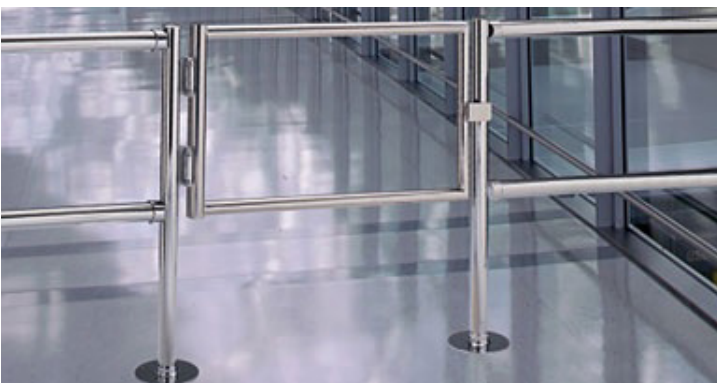
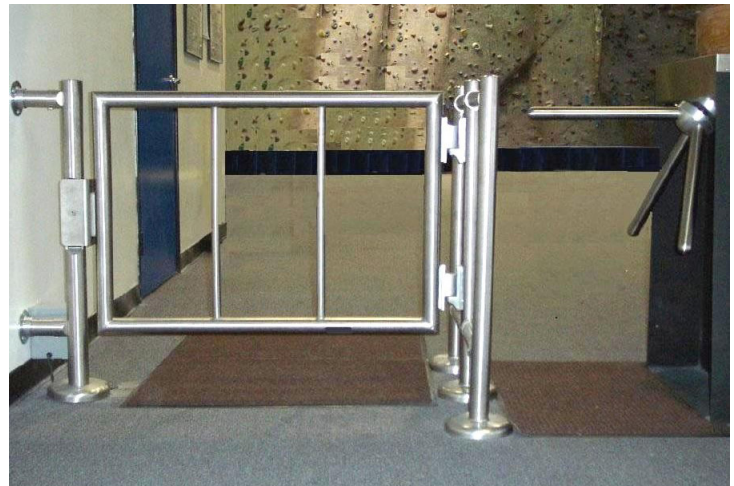
## DESIGN & CONSTRUCTION

- Posts and Rails are made from 2" dia. Stainless Steel
- Single or Double line Rail configuration
- Seamlessly matches our Security Gates
- 2" Diameter Rails are easily inserted into adaptors and secured with a set screw
- Base plate can be finished with attractive stainless steel flange cover
- Stainless steel post cap included

## OPTIONS:

The AdaptaRail system may be ordered in a variety of different configurations.

- The AdaptaRail is ordered in heights of 36".
- Post is available for either a single or double rail configuration. Railing adaptor fittings are attached to the vertical post for a seamless look.
- Rail tubing can be cut to any size needed. Send us your sketches and drawings and we can configure the layout for you or assist with your own ideas.
- The AdaptaRail posts are available with 6" diameter welded floor flanges with a 7" cover.
- AdaptaRail is available in satin stainless finish (standard) or Polished stainless finish. Other materials and finishes are available. Please call with details for a quote.
- Send us your sketches and drawings of the area you wish to configure



## WARRANTY:

Units are warranted against defects in materials & workmanship for a period of one year from date of shipment. See warranty information for details.

Waist High

Full Height

Opticals

ADA Gates

Crowd Control



160A Wampus Lane, Milford, CT 06460

203-877-7096

[sales@HaywardTurnstiles.com](mailto:sales@HaywardTurnstiles.com)

[www.HaywardTurnstiles.com](http://www.HaywardTurnstiles.com)

160-3002-02