

FastTurn Waist High Turnstiles Compare Models

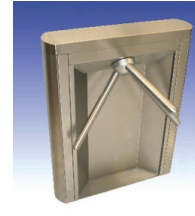


Expert Advice. Great Value. Contact Us Today!

Call: 203-647-9148 Email: sales@haywardts.com

Website: www.haywardts.com

FastTurn Waist High Turnstiles

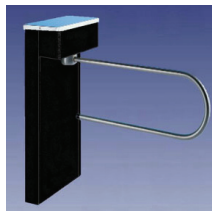


- MODEL**
- Price Range**
- Finish**
- Cabinet Profile**
- Wall Constuction**
- Exterior/Interior Use**
- Portable Model**
- Arm Length**
- Matching ADA Gate**
- Electronic Entry/Exit Control**

MODEL	LC100	MR100	MR200	MR200 Plus	LA100 Four-Arm
Price Range	Entry-Level Value	Mid-Range Value	Premium Value	Premium Value	Mid-Range Value
Finish	Black or Stainless	Stainless	Stainless	Stainless with Custom Top	Chrome or Stainless
Cabinet Profile	Rectangular	Rectangular	Round Streamline	Round Streamline	Post
Wall Constuction	Single	Double	Double	Double	2" tube
Exterior/Interior Use	Exterior/Interior	Exterior/Interior	Exterior/Interior	Exterior/Interior	Exterior/Interior
Portable Model	yes	no	no	no	na*
Arm Length	18"	18"	18"	15"	23"
Matching ADA Gate	LC100 ADA	MR100 ADA	no	MR200 Plus ADA	LA100 ADA
Electronic Entry/Exit Control	option	option	option	option	no

*na = not applicable

Swing Gate Cabinet Style (ADA) Turnstile Matching



- MODEL**
- Price Range**
- Cabinet Profile**
- Finish**
- Exterior/Interior Use**
- Swing Direction**
- Closing Type**
- Electronic Entry/Exit Control**

MODEL	LC100 ADA	MR100 ADA	MR200 ADA
Price Range	Entry-Level Value	Mid-Range Value	Premium Value
Cabinet Profile	Rectangular	Rectangular	Round Streamline
Finish	Black	Stainless	Stainless with Custom Top
Exterior/Interior Use	Exterior/Interior	Exterior/Interior	Exterior/Interior
Swing Direction	One or Two way	One or Two way	One or Two way
Closing Type	Self-close	Self-close/Motorized	Self-close/Motorized
Electronic Entry/Exit Control	option	option	option

Post & Rail Option



Custom sized widths fill any open space.

Single units fit 12" to 60" openings.
Multiple units fit openings greater than 60"